



THE
BESPOKE
— COLLECTION —



DORANS
KITCHEN & HOME



Our Heritage

As a second-generation family business, founded in 1982, we have a firmly established reputation built on trust. Providing high quality products, excellent customer service and creative designers who are passionate about kitchens, we ensure an inspiring portfolio of cabinetry and accessories across our extensive range of kitchens, from customizable to fully bespoke designs.

Trust, quality, customer commitment and passion are at the heart of our company. We uphold the highest standards of integrity in everything we do; we provide high quality products and impeccable service, delivering premium value to our clients and have a genuine passion for every project.

Our designers research globally, staying ahead of the latest trends and design innovation to ensure that each of our carefully curated collections embraces design versatility. Our diverse portfolio ranges from contemporary trend-led schemes to timeless cabinetry and are handcrafted using traditional joinery skills and artisan craftsmanship.

We design honest, properly made cabinetry tailored to suit each client across our three signature collections:

THE
principles
— COLLECTION —

THE
BESPOKE
— COLLECTION —

THE
PREMIUM
— COLLECTION —

Our collections which offer customizable and cost effective options through to fully bespoke cabinetry built from the ground up, give us the freedom to design and create, tailoring to each individual project and budget. This product offering allows each client to see exactly what can be achieved, depending on their individual brief and cost expectation, from creating the look for less, to custom crafted cabinetry designed as part of the architecture of your space. Each design is created with precision and executed with meticulous attention to detail.

contents

introduction:

- Company Introduction - 1
- Introducing the Bespoke Collection - 3

inspiration:

- Classic Schemes - 5
- Contemporary Schemes - 63
- The CREATIONS concept series - 93

the detail:

- Finishes & Styling - 111
- Our Process - 126



The BESPOKE Collection:

Our Bespoke Collection embraces everything there is to love about unique, premium quality, custom crafted cabinetmaking. Each kitchen in this collection is custom designed and expertly crafted with exacting standards and scrupulous attention to detail to meet the precise specifications and desires of every individual client. A truly custom design service, no two kitchens are the same just as no two homes or their owners are the same. A bespoke kitchen project with Doran’s represents a unique journey and collaboration of ideas and inspiration from both designer and discerning client.

Each unique scheme starts with an initial in-depth consultation where we will take time to genuinely understand what our client wishes to achieve from their project. This is where we gain a true and practical understanding of what each client wants in every aspect, from aesthetics to how the space will function and flow. The room in its entirety is taken into careful consideration to ensure the final kitchen design is in perfect proportion, standing seamlessly in its environment as part of the architecture of the space.

Our team of highly skilled designers create every kitchen concept with genuine passion, as though designing a kitchen of their own, providing invaluable input at every stage from earliest concept to the finishing touches. Offering suggestions on design features and finishes, such as colours, materials, and handles, we also work collaboratively, sourcing and incorporating our client’s specific design concepts, transforming their vision into reality.

This collection provides complete design freedom, with varying degrees of design input from each client, depending on how involved they wish to be.

Cabinetry styles and design aesthetic focus on both classic and contemporary genres in this fully bespoke, high-end, inspirational collection. With a selection of lay-on door designs in classic panelled finishes and contemporary slab style facades, channel your style or create a classic-meets-contemporary look with a combination of both. And depending on the look you wish to achieve, choose from painted, natural wood or stained wood finishes for added texture and contrast.

With a selection of Featured classic and contemporary Kitchens to view in our project portfolio, our Creation Concept Kitchens showcase dynamic, design-led schemes using less ubiquitous materials such as slate, metal and Dekton clad doors.

Tailor designed and custom crafted to exceed every client’s expectation, within a budget that will be discussed at an early stage, our truly bespoke collection is uniquely designed and built from the ground up to deliver everything on your wish-list and more. Providing an exceptionally high level of service, design, manufacturing, fitting and finish, your journey to your bespoke kitchen will be seamless and enjoyable from concept to completion. Heritage design for unique interiors, the Bespoke Collection celebrates finest kitchen design with a luxury finish.





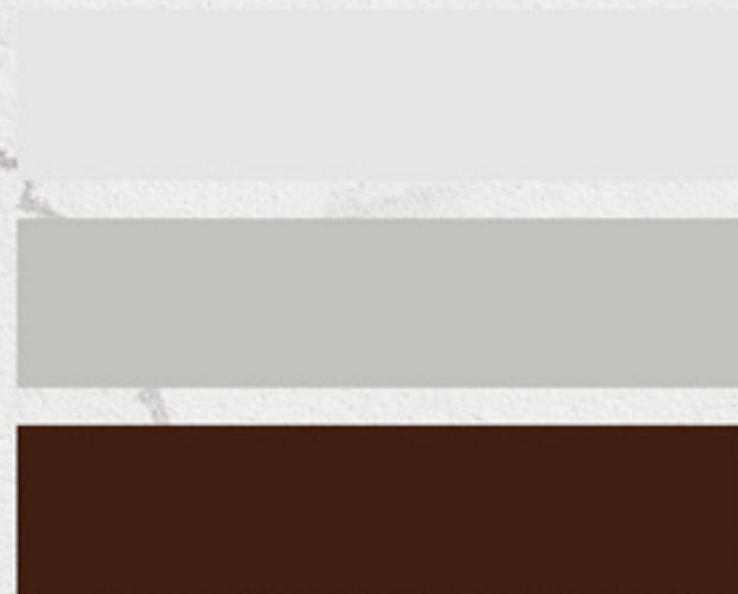
CLASSIC INSPIRATION

THE
BESPOKE
— COLLECTION —



"Kitchens should
be designed around
what's really important:
fun, food and life."

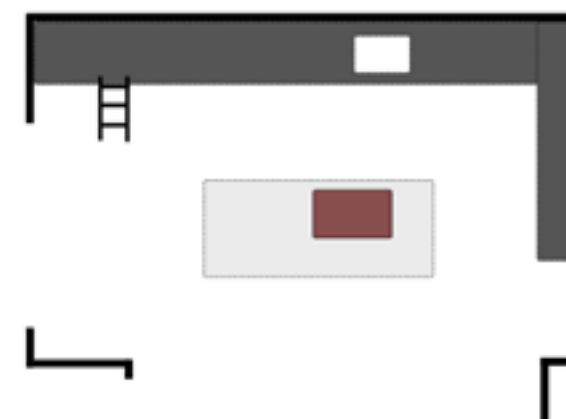
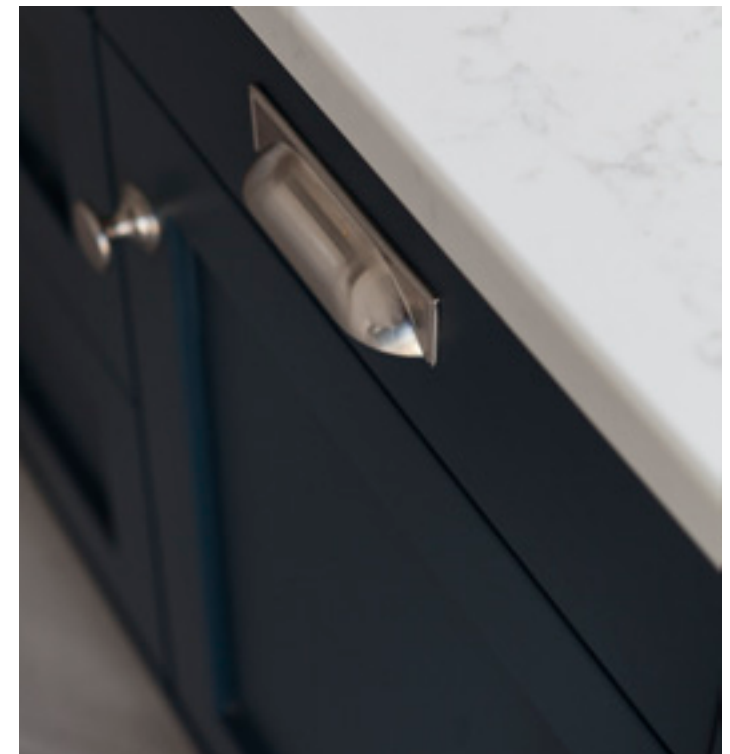
David Boulud





Vintage Vibe

Open shelving, display boxes and a library style ladder bring a distinctive look to this Shaker style scheme with two-tone painted finishes and rich stained oak accents. Extra height cabinetry has been designed to meet the ceiling with moulded scribe, allowing the kitchen to blend in as part of the architecture of the space. Contrasting with the built-in visual, the open shelving and ladder add a layer of old-school style and quirkiness. Completing the look, the subway wall tiles add texture and contrast for a look that's laid back and cool.



-KEY POINTS-

FINISH: Pavilion Grey, Hague Blue & Stained Oak

WORKTOP: Carrera S Quartz

CABINETRY HEIGHT: 2910mm

CORNICE/TOP FINISH: Bell scribe to ceiling

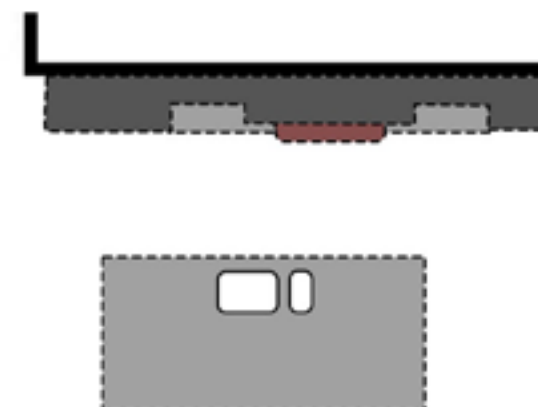
SINK & TAP: S/steel undermount & Quooker

PLINTH: Recessed with plinth shelf

Kitchen Architecture

Designed and crafted in perfect proportion to its surroundings, this bespoke kitchen optimises the room's generous dimensions, taking the cabinetry to full ceiling height for a luxurious finish. No shadow gaps or areas of unused space, the main run of kitchen furniture rises from floor to ceiling with finest beaded shaker detailing on the multi-panelled door design. Glass light boxes feature to either side of the canopy for perfect symmetry with a central island enhanced with ceiling bulkhead, finished with crown moulding to complete the look.





-KEY POINTS-

FINISH: Strong White

WORKTOP: Calcutta Gold Quartz with OGEE edge

CABINETRY HEIGHT: 2600mm

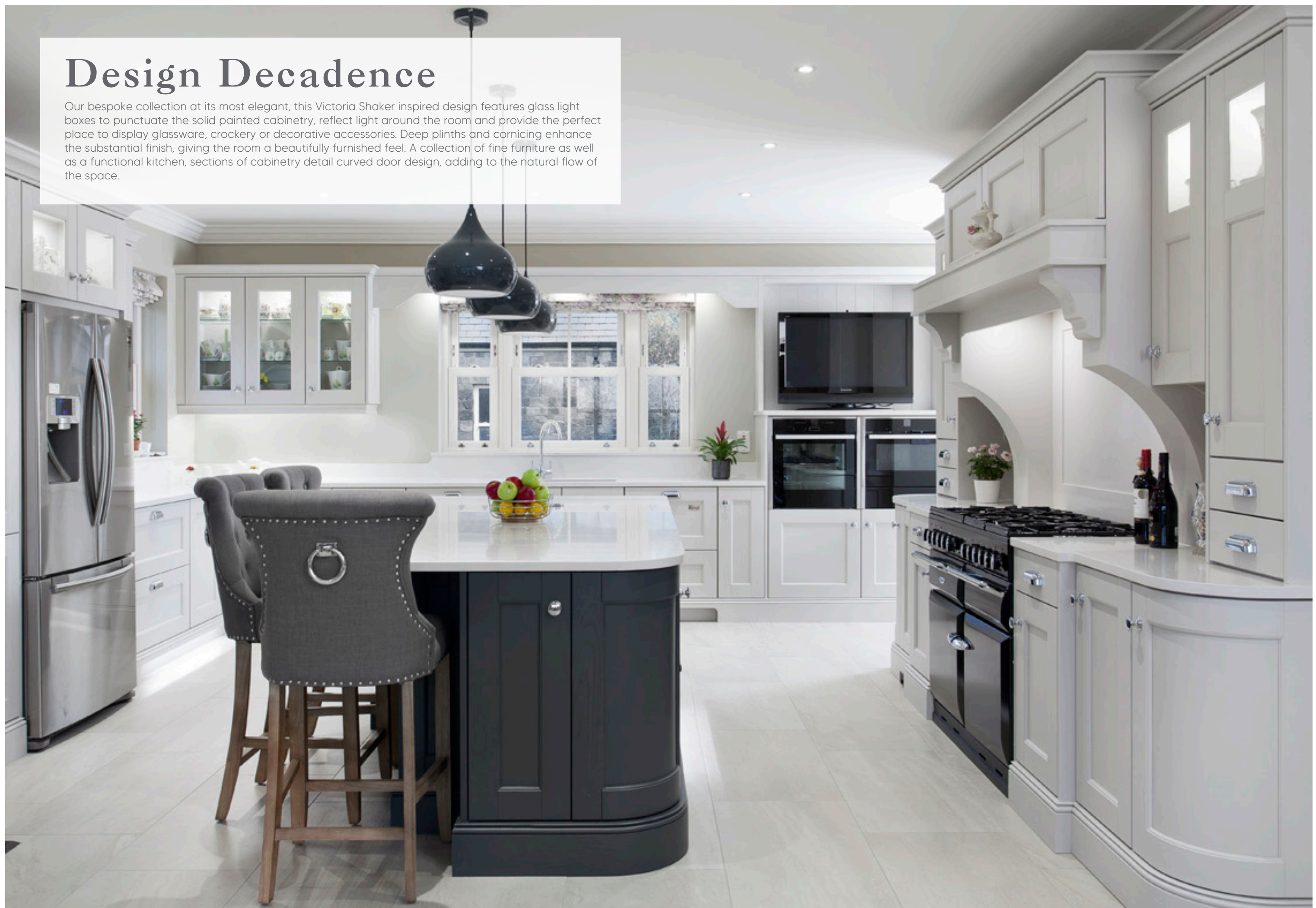
CORNICE/TOP FINISH: Bell scribe to ceiling

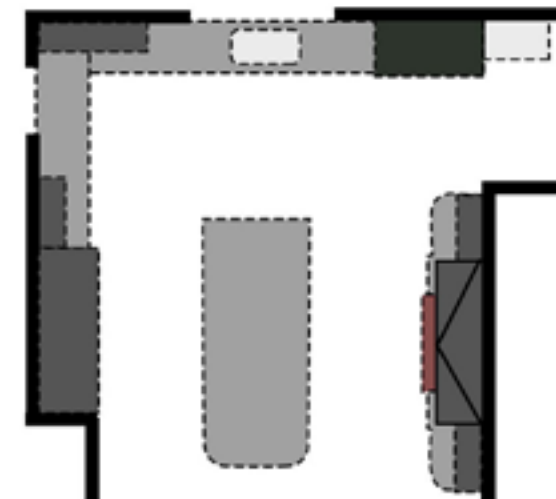
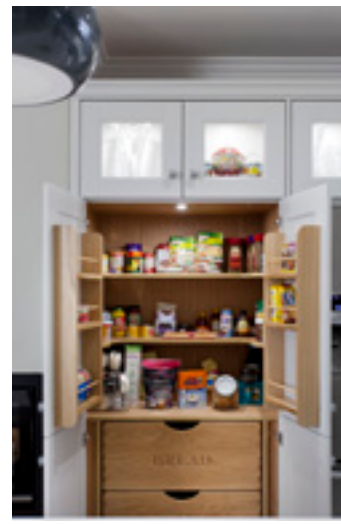
SINK & TAP: S/steel undermount & Quooker with Cube

PLINTH: Torus skirting

Design Decadence

Our bespoke collection at its most elegant, this Victoria Shaker inspired design features glass light boxes to punctuate the solid painted cabinetry, reflect light around the room and provide the perfect place to display glassware, crockery or decorative accessories. Deep plinths and corning enhance the substantial finish, giving the room a beautifully furnished feel. A collection of fine furniture as well as a functional kitchen, sections of cabinetry detail curved door design, adding to the natural flow of the space.





-KEY POINTS-

FINISH: Bespoke Egyptian Cotton Mix & Downpipe

WORKTOP: Yukon quartz

CABINETRY HEIGHT: 2300mm + Mantle step up

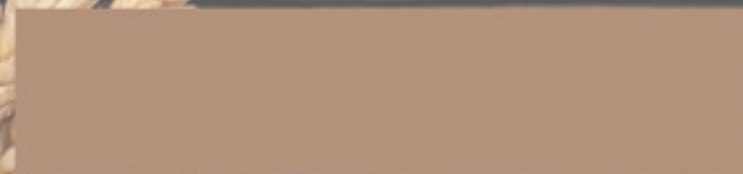
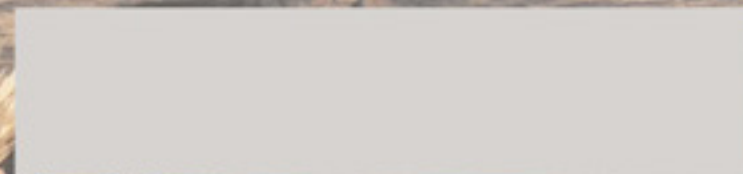
CORNICE/TOP FINISH: Classic cornice

SINK & TAP: Silgranite undermount & Blanco Max

PLINTH: Traditional skirting

"Design is so simple.
That's why it's
so complicated."

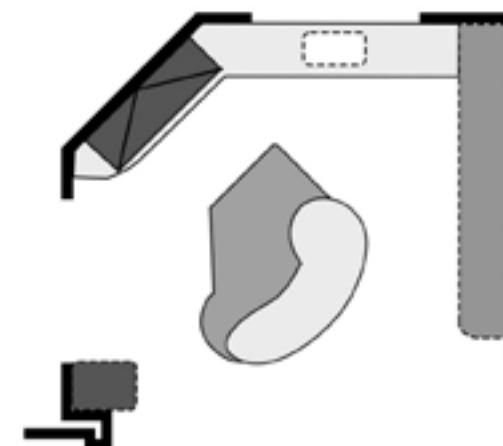
Paul Rand





Sweeping Curves

Designed with function and flow at the fore, this timeless scheme gives the room an inviting ambience with natural circulation space enhanced by the contoured island and breakfast bar as a striking focal point. Painted in a light and versatile colourway, the design features natural oak accents and internals, ensuring the cabinetry is beautiful both inside and out.



-KEY POINTS-

FINISH: Skimming stone & Natural Oak

WORKTOP: Calcutta Gold & Oak Woodblock

CABINETRY HEIGHT: 2340mm

CORNICE/TOP FINISH: Crown moulding

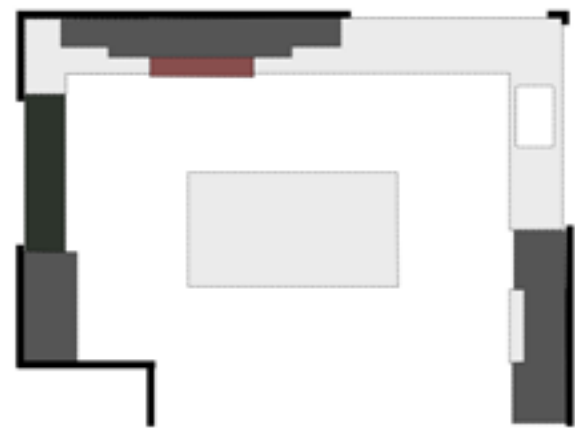
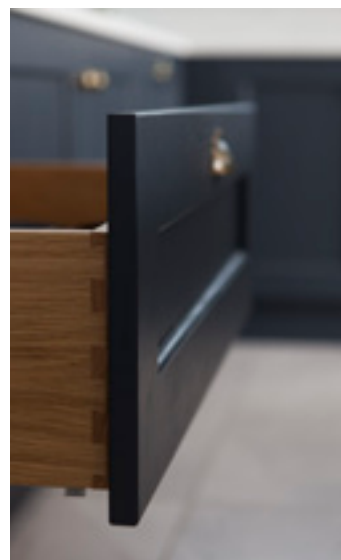
SINK & TAP: S/steel undermount & Quooker

PLINTH: Traditional skirting

Enhanced Shaker

Adding dramatic impact to a timeless Shaker style door, this painted finish in darkest grey showcases stunning colour saturation for a bold and memorable finish. Teamed with brass cup handles and crisp quartz work surfaces, this light and dark contrast will look at home in both contemporary and classic interiors. Including a breakfast cabinet with countertop for small appliances and a window seat opposite, space and functional storage balance perfectly with this luxuriously furnished feel.





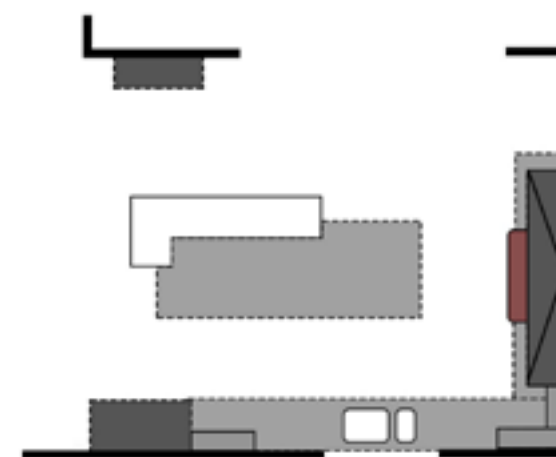
-KEY POINTS-

- FINISH: Railings
- WORKTOP: Carrera S quartz
- CABINETRY HEIGHT: 2300mm + Mantle step up
- CORNICE/TOP FINISH: Classic cornice
- SINK & TAP: S/steel undermount & Quooker
- PLINTH: Recessed



Linear Look

Taking inspiration from its beautiful linear environment with a vaulted ceiling feature, this unique design combines clean lines and purity of form with moulded door design and vintage-inspired reeded glass detailing. Contemporary meets classic with the pared back island and breakfast bar design, offset against the more traditional artisan door design, completed with painted and solid walnut dresser as a beautiful piece of furniture in its own right.



-KEY POINTS-

FINISH: Pavillion grey & Walnut

WORKTOP: Snow White Quartz & Walnut Woodblock

CABINETRY HEIGHT: 2400mm

CORNICE/TOP FINISH: Classic cornice & scribe to ceiling

SINK & TAP: S/steel undermount & Quooker

PLINTH: Recessed



*"Great design
answers a question,
offers a solution
and solves a problem."*

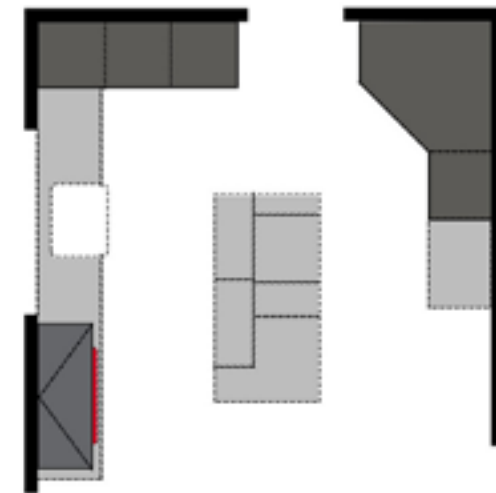
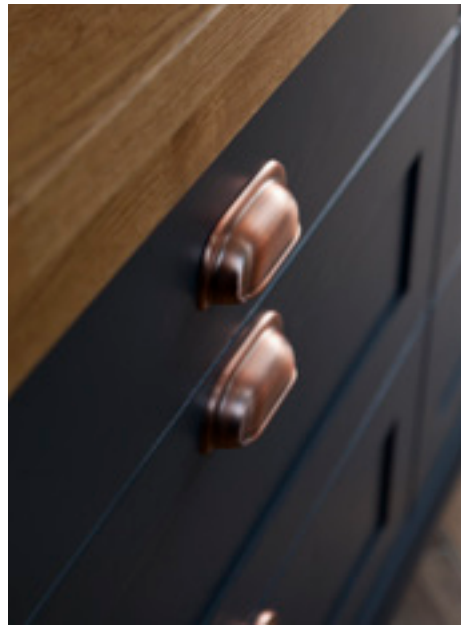
Dana Hughes





Copper Accents

Rich tones of darkest grey and warmest copper define the dramatic look in this bespoke, Shaker-inspired design. With tall cabinetry designed to meet the ceiling coving, the room has a beautifully furnished feel, enhanced by a fine selection of materials and finishes, detailed in the tiled splashback, herringbone flooring, industrial style bar stools and stunning custom canopy.



-KEY POINTS-

FINISH: Railings

WORKTOP: Snow white quartz & Oak Woodblock

CABINETRY HEIGHT: 2570mm

CORNICE/TOP FINISH: Crown moulding

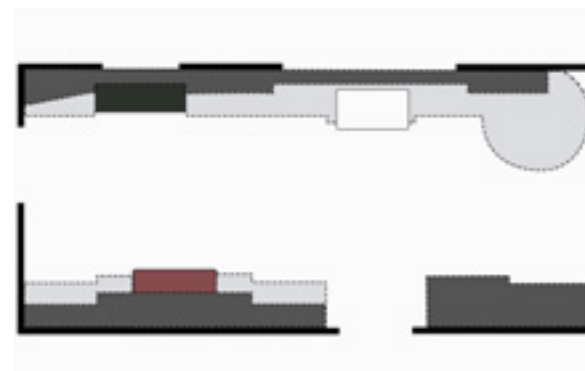
SINK & TAP: Single Belfast & Quooker Classic

PLINTH: Bevelled skirting



Georgian Influence

Rather than allowing the architecture of the room to dictate the design, this one-off scheme has been created to embrace the existing ceiling detail. The bespoke design allows total design freedom, with cabinetry created to work with the structural ceiling beam, allowing the kitchen furniture to continue further along the length of the room, connecting seamlessly with the dining area. Georgian style glass panes bring detail and contrast to the light painted cabinetry, while accent walnut adds warmth and richness.



-KEY POINTS-

FINISH: Dimpse & Walnut

WORKTOP: White Arabesque Quartz

CABINETRY HEIGHT: 2300mm + Mantle step up

CORNICE/TOP FINISH: Classic cornice & scribe to ceiling

SINK & TAP: Double Belfast & Blanco Eye

PLINTH: Recessed



Modern Farmhouse

Offering a fresh and contemporary take on authentic farmhouse style design, this painted kitchen with brass accents and ceramic farmhouse sink channels a warm and homely vibe yet with a light and uplifting feel. Eye-level ovens break up the expanse of full height cabinetry, while wall cabinets and floating shelving pop against the feature sage green shade, continued from the central island. Deep plinth design and towel rails on the island give a nod to the traditional country kitchen, with chunky butcher's block style breakfast bar.

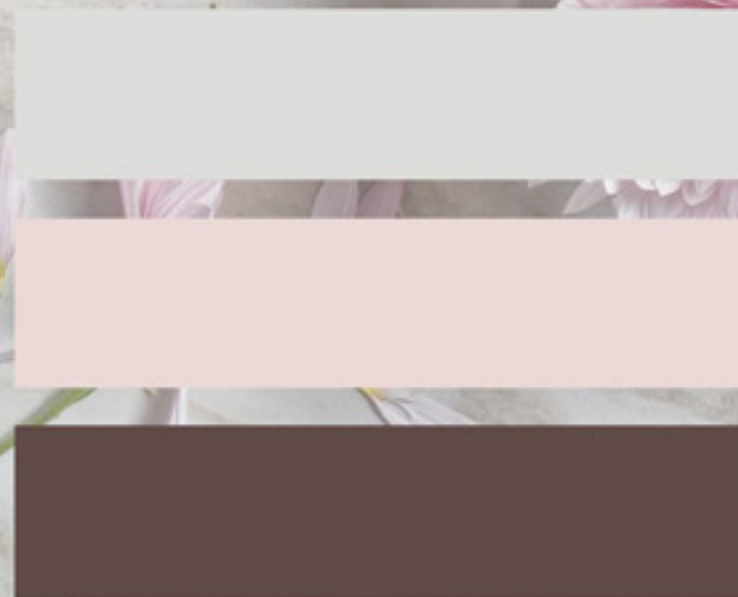


-KEY POINTS-

- FINISH: F&B Pointing & Card Room Green
- WORKTOP: Calcatta Gold Quartz & Oak Woodblock
- CABINETRY HEIGHT: 2450mm
- CORNICE/TOP FINISH: Bell scribe to ceiling
- SINK & TAP: Double Belfast & Blanco Vicus
- PLINTH: Torus skirting

"The best rooms have
something to say
about the people who
live in them."

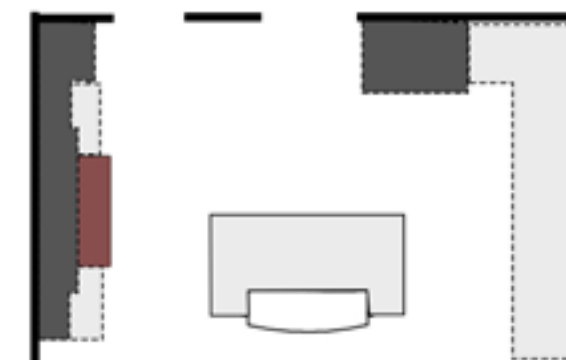
David Hicks



Stepped Shaker

Working carefully with the existing room proportions, our Classic Shaker ensures balance and scale. A stained oak inset breakfast bar brings warmth and contrast to the rich painted finish, with stained oak accents continued in the display shelving with recessed down-lighting feature. Nickel cup handles and knobs, a stainless-steel American style fridge freezer and utilitarian style bar stools achieves an industrial aesthetic, complete with barn style door.





-KEY POINTS-

FINISH: Hague blue & Calamine

WORKTOP: Starlight white Quartz
& Stained Oak Woodblock

CABINETY HEIGHT: 2120mm + Mantle & Fridge step up

CORNICE/TOP FINISH: Classic cornice

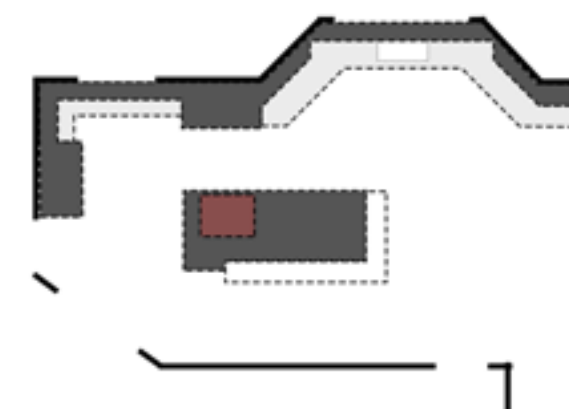
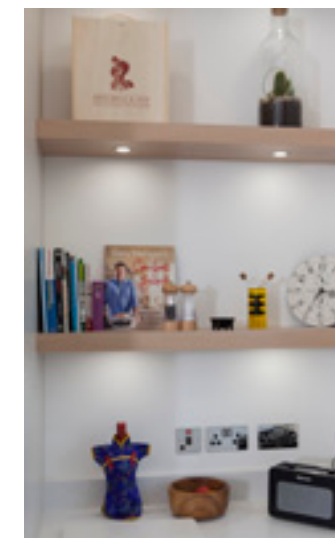
SINK & TAP: Double Belfast & Blanco Vicus

PLINTH: Recessed

Tailored Design

Following the form of this angular vaulted space, this Shaker style cabinetry has been meticulously planned and precision designed to stand seamlessly in its unique surroundings. Stepped to complement the room angles, the window and sink area has been defined with integrated lighting above. With glass-fronted sections and an alcove of display shelving, this design gives the room a beautiful balance of space and light.





-KEY POINTS-

FINISH: Ammonite

WORKTOP: Eternal Statuario Suede Quartz

CABINETRY HEIGHT: 2600mm

CORNICE/TOP FINISH: Classic cornice

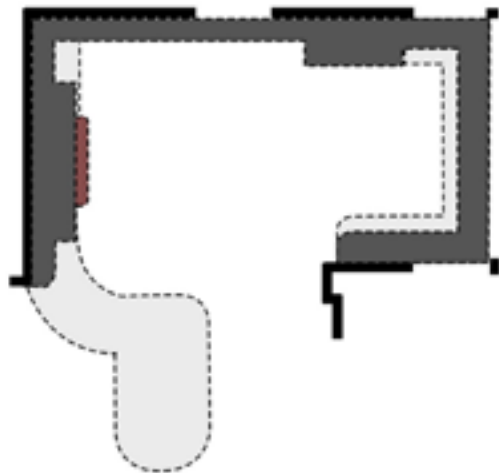
SINK & TAP: S/steel undermount & Blanco Trim

PLINTH: Recessed with plinth shelf

Artisan Craftsmanship

Taking the room in its entirety into account, this bespoke handcrafted scheme continues its classic cabinetry around the internal doorway for a clean, unbroken line and seamless finish. Framing the doorway, glass elements reflect light and provide an ideal place to display stemware, with a custom designed built-in lighting scheme illuminating the interior, adding ambience after dark.





-KEY POINTS-

- FINISH: Bespoke Off White mix & Lulworth Blue
- WORKTOP: Eternal Statuaio quartz
- CABINETRY HEIGHT: 2400mm
- CORNICE/TOP FINISH: Crown moulding
- SINK & TAP: S/steel undermount + Prep & Quooker + Blanco Eye
- PLINTH: Torus skirting



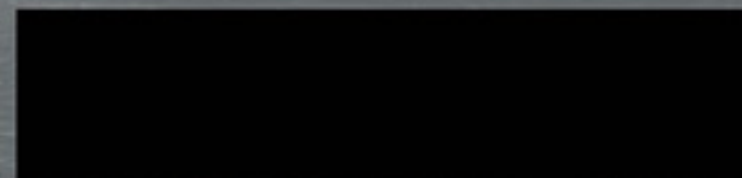
CONTEMPORARY INSPIRATION

THE
BESPOKE
— COLLECTION —



"Thinking about
design is hard, but
not thinking about
it can be disastrous."

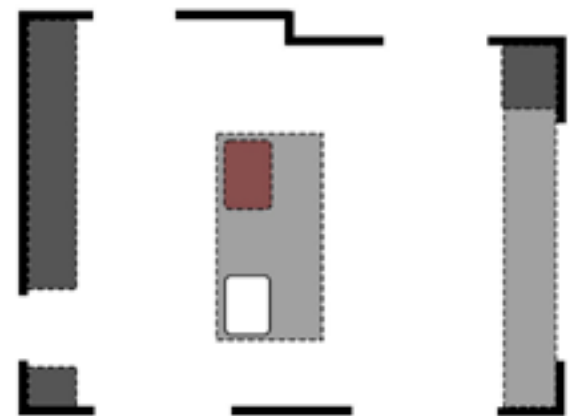
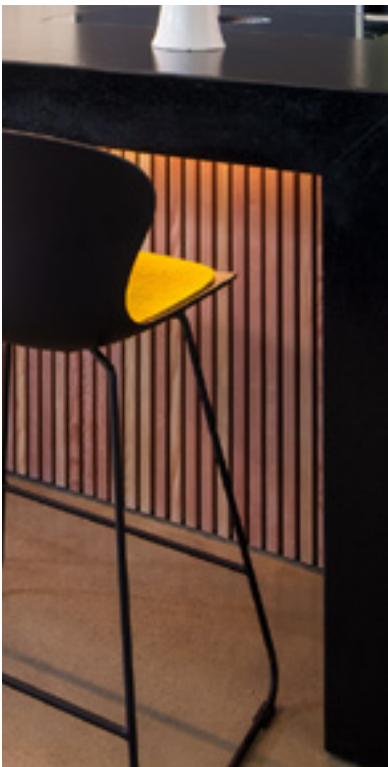
Ralph Caplan





Sleek and Streamlined

A true handleless design, this statement scheme delivers dramatic impact with its striking combination of dark cabinetry and surfaces with a yellow pop of colour. Add to this the limed Douglas Fir & charred 'Shou Sugi Ban' Larch slatted detailing, built-in hob with integrated extraction and black sink and tap combination, this kitchen is quite the showstopper! Mixing up the surface profiles with a deep wrap on the island ensures this feature commands presence.



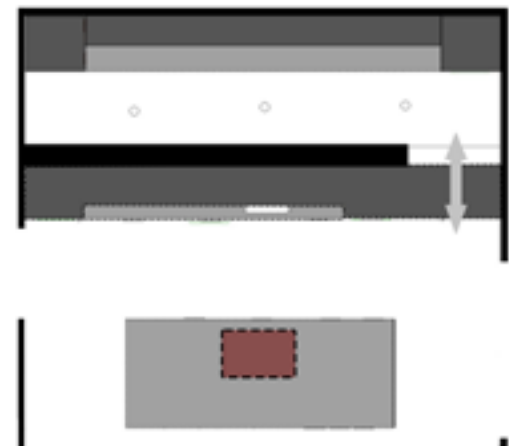
-KEY POINTS-

- FINISH: Jet Black
- WORKTOP: Moak Black Sensa Granite
- CABINETRY HEIGHT: 2900mm
- CORNICE/TOP FINISH: Shadow gap
- SINK & TAP: Silgranite undermount & Designer black
- PLINTH: Recessed

Recessed Style

Designed at the early planning stages, this kitchen has been crafted to literally fit into its surrounding architecture for a seamless, wraparound finish. A recess was created to house the full expanse of contemporary style doors with slimline handle and feature chevron panels above the sink area. Quartz marble effect work surfaces and splashback adds another level of luxe, with island overhang perfect for casual dining at the breakfast bar.





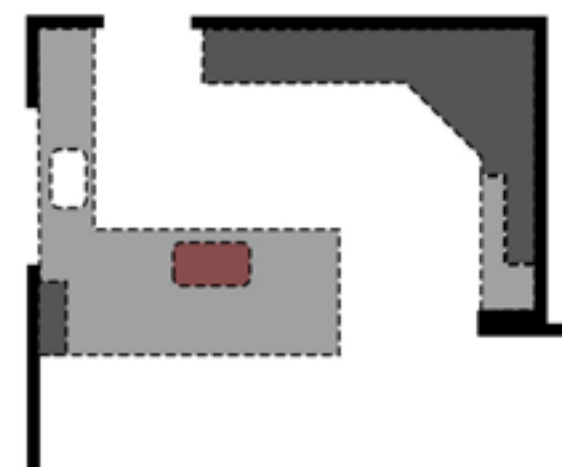
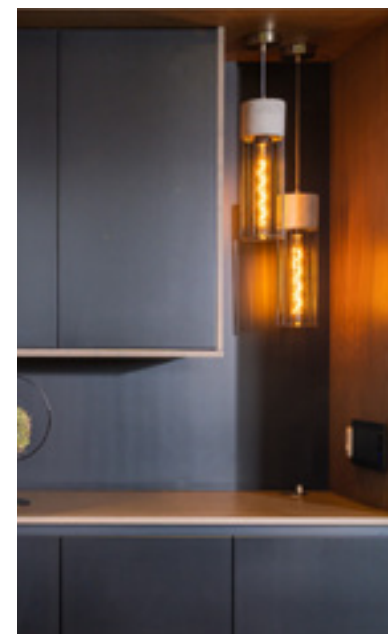
-KEY POINTS-

- FINISH: Smoked oak & dark stained oak chevron
- WORKTOP: Calcutta Gold
- CABINETRY HEIGHT: 2365mm
- CORNICE/TOP FINISH: Shadow gap
- SINK & TAP: S/steel undermount & Quooker
- PLINTH: Recessed



Sculpted Design

With a super slim Dekton profile on the island surface and waterfall edge, the peninsula has a strong, sculptural appearance contrasted with an unexpected colour contrast on the back panel. Tall cabinetry with cleverly concealed storage has been designed to fit into the wall for a set-in-stone effect. Continuing the stone theme, polished concrete flooring adds texture and warmth to the scheme.



-KEY POINTS-

FINISH: Off Black & Charlotte's lock

WORKTOP: Deckton Laos

CABINETRY HEIGHT: 2300mm

CORNICE/TOP FINISH: Shadow gap

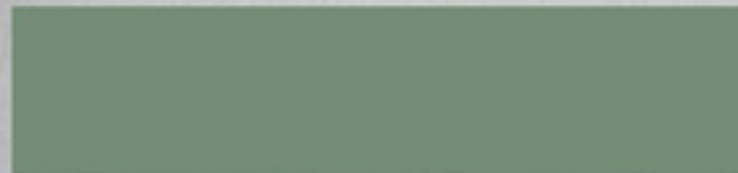
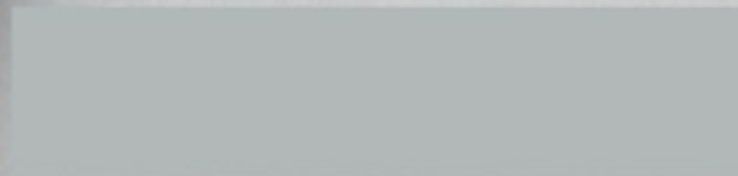
SINK & TAP: Silgranite undermount & Quooker

PLINTH: Recessed



*"A design isn't
finished until someone
is using it."*

Brenda Laurel



Wraparound Island

Achieving a streamlined finish on the wall of tall cabinetry, the rest of this design has been dedicated to a fabulous wraparound prep, cooking and dining zone. Designed on three sides, this dual island creation is connected with the hob run to deliver the ultimate focal point. The tall handle-free cabinetry has been designed to blend into the wall, allowing the wraparound island to really shine.





-KEY POINTS-

FINISH: White

WORKTOP: Deckton Fossil

CABINETS HEIGHT: 2200mm

CORNICE/TOP FINISH: Matching framing

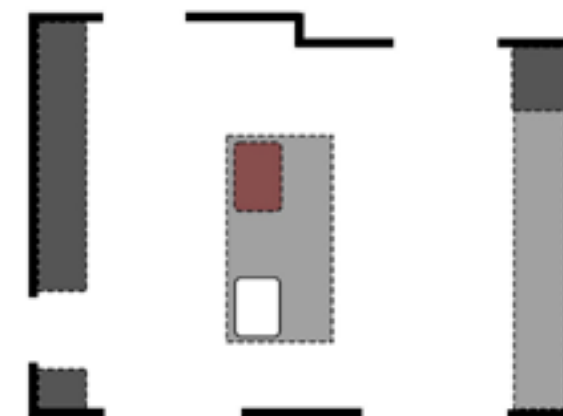
SINK & TAP: S/steel undermount & Quooker

PLINTH: Recessed



Mixed Materials

Combining a smooth light finish with a dark and textured walnut, this contemporary style achieves an uplifting two-tone contrast. Work surfaces have been selected to complement the expanse of tall furniture and wall cabinetry to enhance the light meets dark theme. A substantial ceiling bulkhead housing the extraction and built-in lighting defines the island as the central cooking zone.



-KEY POINTS-

FINISH: Bespoke Ivory mix & Walnut

WORKTOP: Silken Pearl Quartz

CABINETRY HEIGHT: 2300mm

CORNICE/TOP FINISH: Contrasting framing

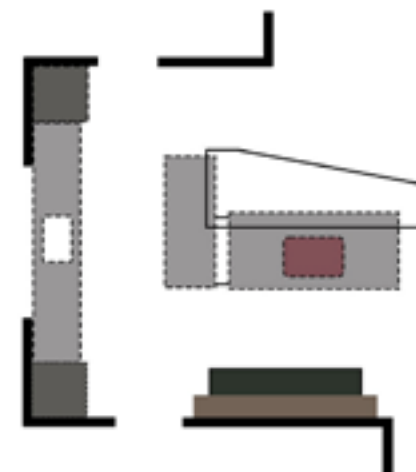
SINK & TAP: S/steel undermount & Blanco Sole

PLINTH: Recessed



Entertaining Space

Designed as a sociable and highly functional entertaining space, this contemporary kitchen has been styled with an unusual feature wall, housing not only the ovens but also display storage and a TV. Bridging the gap between cooking, dining and living, the aesthetic is influenced by contemporary living spaces with wall mounted TVs and bookcases with recessed display boxes. Complete with walk-in pantry in the same contemporary handle-free design, the space is clutter-free, incorporating a multitude of storage.



-KEY POINTS-

FINISH: Ammonite

WORKTOP: Calacatta Wave Quartz

CABINETRY HEIGHT: 2300mm

CORNICE/TOP FINISH: Capping finish

SINK & TAP: S/steel undermount & Blanco Linus

PLINTH: Recessed with plinth shelf



The CREATIONS Concept Series

THE
BESPOKE
— COLLECTION —



The Hybrid Creation

Contemporary meets classic for timeless, best of both worlds design. The freedom of our bespoke collections allows you to create a truly unique combination of beautifully detailed cabinetry contrasted with the clean lines of contemporary slab doors, with a range of finishes including true handleless facades. Pair the enduring appeal of Shaker style cabinetry with the sleek modern finish of handleless slab doors for a contemporary take on a classic.



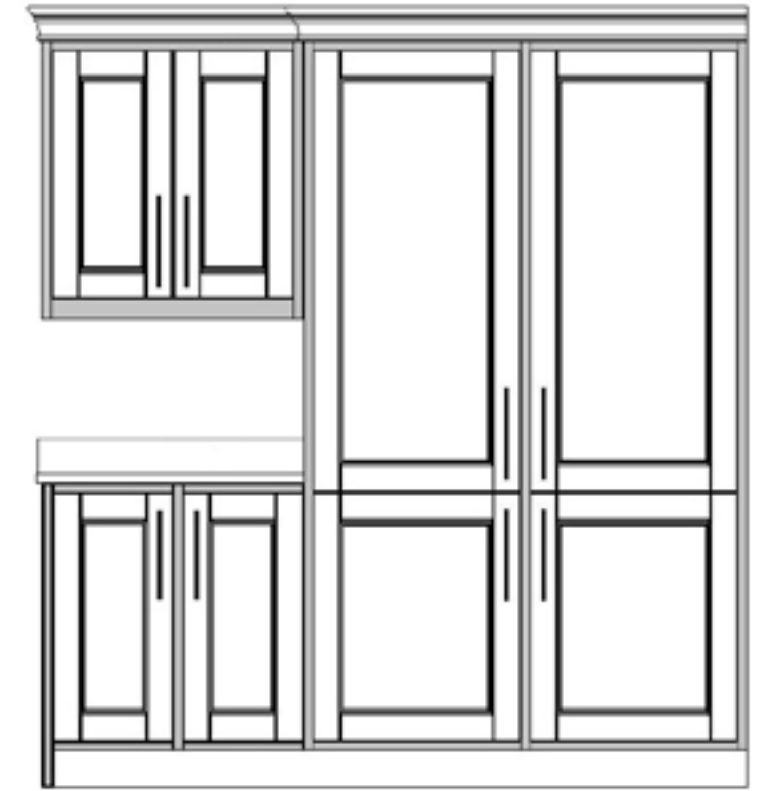




The Mock Frame Creation

Achieving an in-frame look for a fraction of the cost (price point between our Bespoke lay-on door finish and Premium in-frame cabinetry) our Mock Frame concept showcases a beautiful traditional artisan aesthetic with a 30mm square profile frame built around the cabinetry for a highly effective, luxurious in-frame effect. With classic panelled doors from our fully bespoke collection for total design freedom, using fine materials for a fully furnished finish.



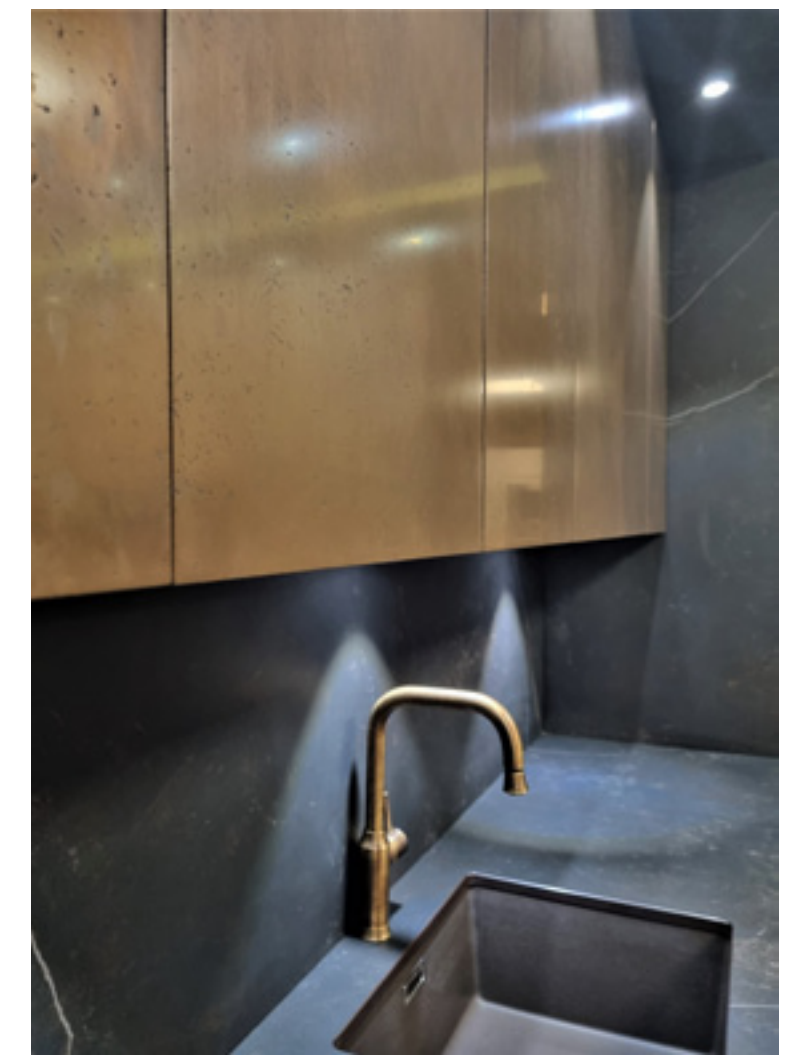




The Geo Creation

Design-led kitchen architecture using innovative materials to achieve statement schemes with maximum dramatic impact and functionality. Combining a cool industrial vibe with a high-end luxury finish, Geo takes cutting edge design to another level. A collection of real metal finishes complemented with real slate veneers, Geo can be used to create a complete kitchen or as an accent feature alongside our contemporary painted or wood slab finishes.



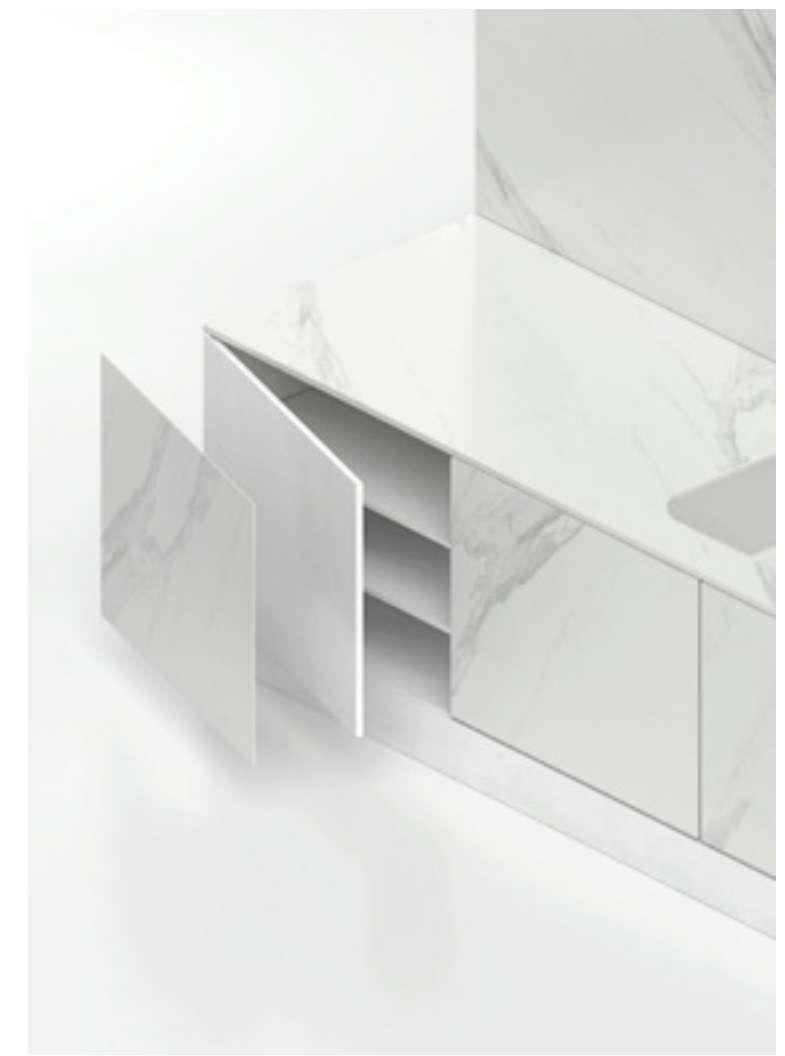




The Dekton Creation

Originally developed for wall cladding, Dekton by Cosentino ultra-compact surfacing opens up a whole new world of kitchen design possibilities for contemporary cabinetry. The perfect finish for minimalist kitchens, from work surfaces to doors and full island cladding, our Dekton Creation achieves the ultimate seamless, streamlined aesthetic, especially when used to clad a full island, allowing doors to run seamlessly into the worktop for a stunning sculptural visual.







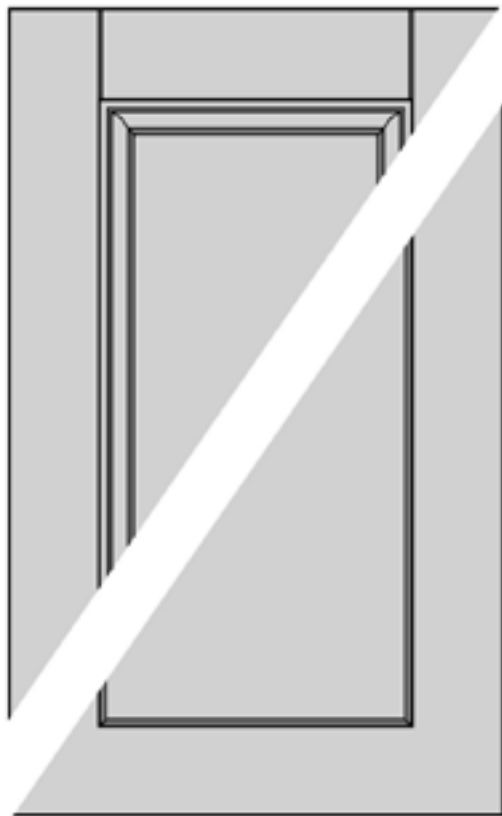
FINISHES, STYLING & The DETAIL

THE
BESPOKE
— COLLECTION —

door styles



When it comes to door style, we don't have a fixed range, our Bespoke collection is just that. Each door set is produced to every individual clients specifications. Above is a selection of our base designs but you are free to customise and create as you wish and we will advise along the way to ensure the scheme in its entirety comes together fittingly.



Classic:

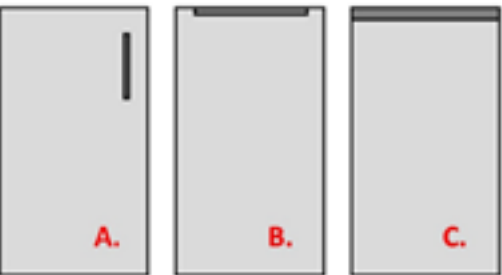
Our Classic panelled doors have an almost endless number of options and configurations but the main design factors can be broken into 4 -

- Visible or flush jointing.
- Width of frame.
- Internal frame moulding/slipping.
- Centre panel profile.

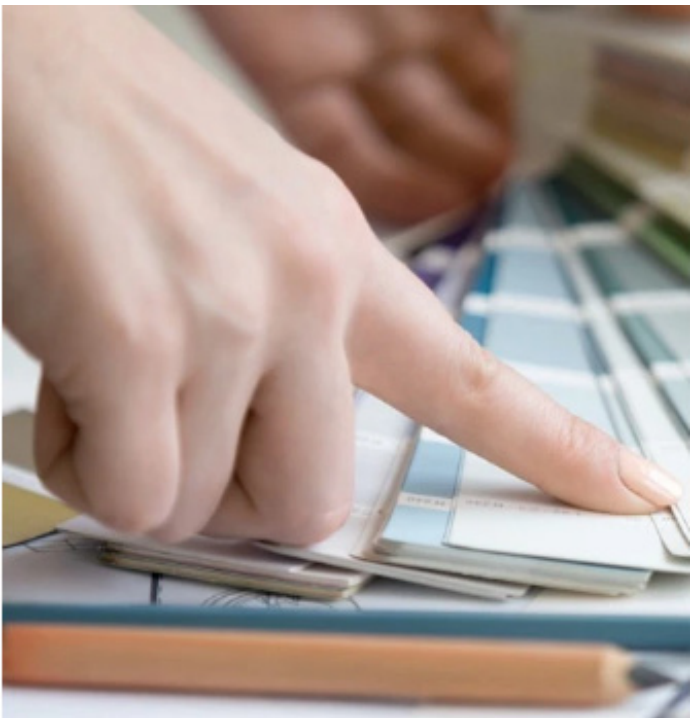
Contemporary:

Our Contemporary slab doors will clearly have less option on design, however consideration should be given to the opening means as this will have a strong impact on the finished aesthetic -

- Universal Handle.
- Zenneth style semi
- True handleless



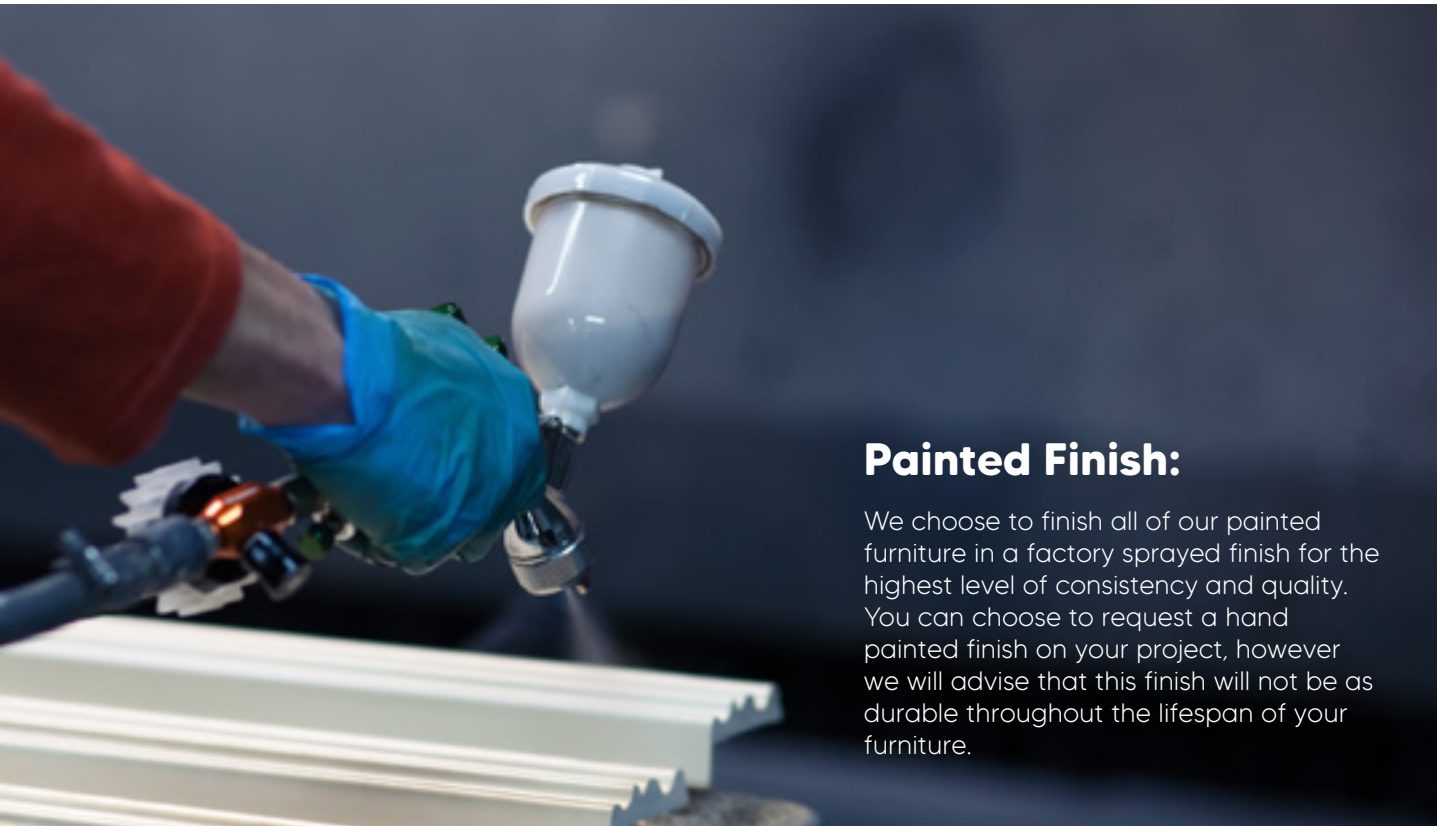
finishes



Finishes:

Whether it's a muted timeless scheme or a bold statement you are striving for, we will have a finish for you. Main options include: Painted with grain - Painted smooth - Natural wood - Stained wood

For our painted finish, we have over 125 colours to choose from in our Bespoke collection, and you will have the additional option of using 1 of our 26 Principles paints. If you still haven't found the perfect shade you can avail of our colour matching service and provide us with a sample colour for your project and we will have it made.



Painted Finish:

We choose to finish all of our painted furniture in a factory sprayed finish for the highest level of consistency and quality. You can choose to request a hand painted finish on your project, however we will advise that this finish will not be as durable throughout the lifespan of your furniture.

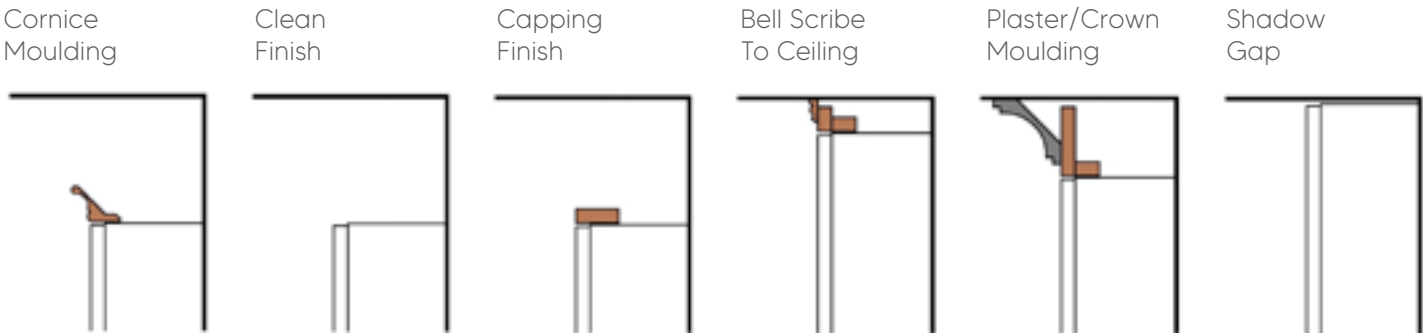
cabinetry height and finishing



We can design and manufacture your cabinetry to any height you wish. If you choose to keep the top of your cabinetry finishing down from the ceiling, for a Classic or Traditional scheme we have a selection of cornice mouldings, for a more Contemporary finish you can leave it clean or choose to add a capping shelf to finish.

If opting to bring your cabinetry right up to the ceiling (Or to meet a bulkhead/ceiling drop) for a Classic or Traditional finish you can choose to either finish with a Bell Scribe or Crown/Plaster moulding. With a Contemporary scheme we would usually opt for a shadow gap.

Cabinet Top Finishes:



plinth detail



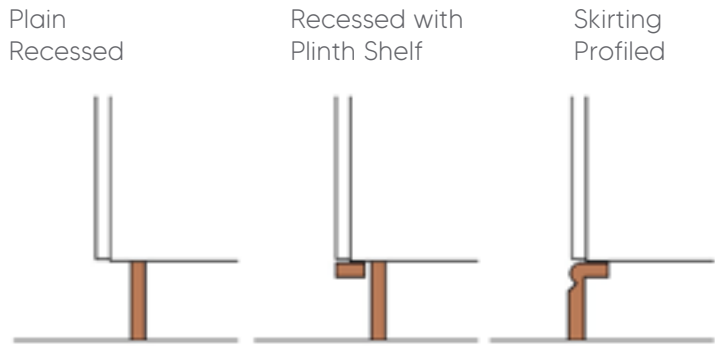
The plinth (or toe space) around the bottom of your kitchen will typically be 150mm high plain recessed. To add subtle detail you can choose to include a plinth shelf, this will be recommendable if you are opting to have plinth strip lighting around the bottom of your kitchen.

To give classic & traditional styles the ultimate luxury feel, our skirting plinths elevate the finish to the next level. With this finish we will include toe space recesses where we feel the main working areas will be for perfect ergonomic comfort.

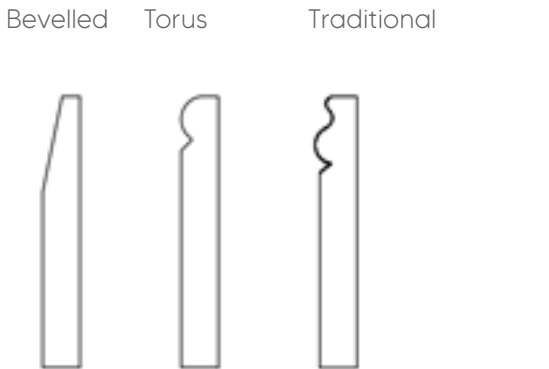


Plain Recessed Recessed with Plinth Shelf Skirting Profiled

Plinth Finishes:



Skirting Profiles:



end panels



Plain profile side panel



Feature door side panel



Feature multi panel side panel



T&G profile side panel.



Worktop waterfall side panel



Feature door side panel



Contemporary handleless return



Plain profile side panel



T&G profile side panel



Feature door side panel



Contemporary handleless return side panel



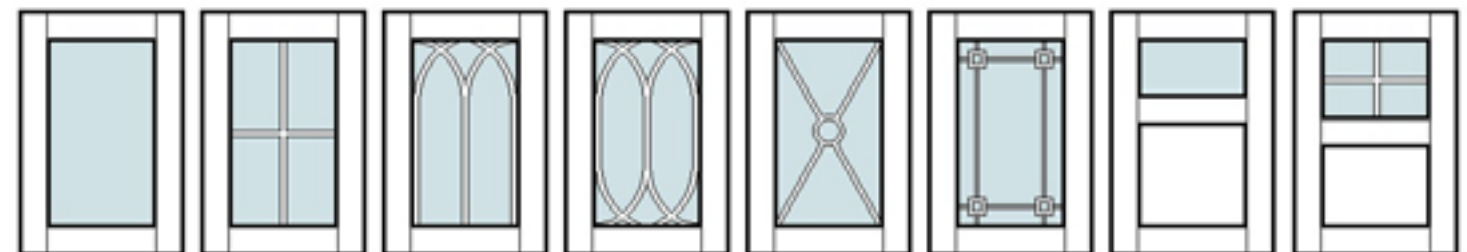
Worktop waterfall side panel

featured / glazed frames



Glazed & feature framed doors are a stunning way to introduce some detail and soft lighting throughout your space. There is a wide variety of frame styles & arrangements, which can be teamed with a large selection of glazing types.

Feature Frame Selection:



worktops

Solid Wood:

Striking, warm and welcoming, solid wood is a beautiful and natural choice for your Worktops and design options are endless. Softer than granite, quartz & Dekton, this material can scratch and can burn if in contact with high heat items, but these issues can be easily rectified by the most amateur DIYer. As your main worktop, it will be treated with a natural Danish or Linseed oil. This treatment must be continually topped up every 6-12 months by the end user. As a feature piece or breakfast bar these pieces are finished with a hardened lacquer, which doesn't require maintenance.



Granite:

A 100% natural material that is extremely hard, scratch resistant and heat resistant, with every slab having a completely unique beauty. It is a great choice for heavily used kitchen worktops with a small amount of care required to avoid staining and when using extreme high heats. When selecting this material it is common to be offered the opportunity to go and select your individual slabs, as unlike man-made materials, these slabs are not consistent meaning colour variations and differences in the 'movement' of a stone are very common.



Quartz:

Quartz in its raw state is natural, but is engineered and mixed with a small amount of other materials to form the hugely popular worktop material. Extremely hard, scratch resistant and stain resistant. It is a great choice for heavily used kitchen worktops with a small amount of care required with very hot items which can cause burns to the resin content in the engineered material.

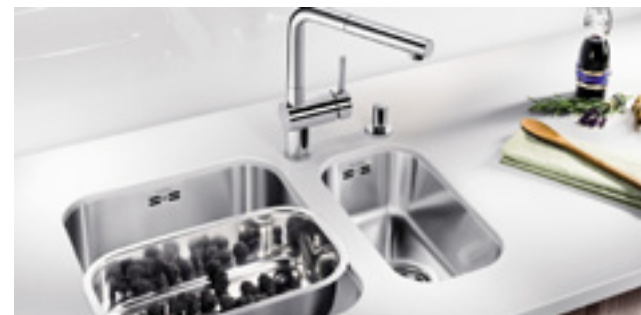


Dekton

A man made material that offers unparalleled protection against staining, scratching & high temperatures. Available in high polished & matt finishes this material offers huge choice for any style. Limitations arise if considering edge details and/or recesses at sinks as the core of this material is colour matched and not perfectly consistent with the face of the material.



sinks and taps



Sinks: Our range of Blanco German made sinks cover a wide variety of styles, configurations and materials to satisfy every function & aesthetic requirement you might have. Finishes include Stainless steel, Silgranite composite & Ceramic, with individual bowl sizes available from 16cm to 70cm.

Taps: With more options than ever on style, finish & functionality our Blanco and Perrin & Rowe collections cover all. From uber contemporary stainless steel designs to classic & traditional brass and copper stylish models, the options are plentiful with features such as pull out spray heads, integrated water filtration and smart tap technology that has built in volume measuring.

Boiling Hot: The original and still the market leader for very good reason! The Quooker tap delivers 100°C boiling hot water on demand in an extremely safe and energy efficient way. Available in a variety of styles & finishes the range now includes features such as filtered, chilled & sparkling water.

BLANCO
MADE IN GERMANY

PERRIN & ROWE
MAYFAIR LONDON

Quooker
THE BOILING-WATER TAP

handles



With a vast variety of finishes, styles & sizes available, we have over 250 handles to choose from in our showroom.

Beyond these ranges we have partnered with Heritage Brass, Dowsing & Reynolds & Armac Martin to give a truly stunning and extensive offering.

Heritage Brass
DOOR & CABINET HARDWARE

ARMAC MARTIN



appliances



Whether you are operating what feels like a commercial kitchen for a growing family or you long for the ping of the microwave 5 evenings a week, your selection of appliances needs to compliment the way you use your kitchen and fit with the style of the room. Is it the grand range cooker that you wish to be a focal point in your classic farmhouse, or much more streamlined and hidden appliances that won't break the lines of your ultra contemporary space.

We operate as a fully independent showroom, meaning we can offer you any combination of appliance brands and models to suit your needs, style & budget. Over the years we have built close partnerships with expert wholesalers who not only offer competitive pricing but also independent and honest advice to give you the best package at the best value.

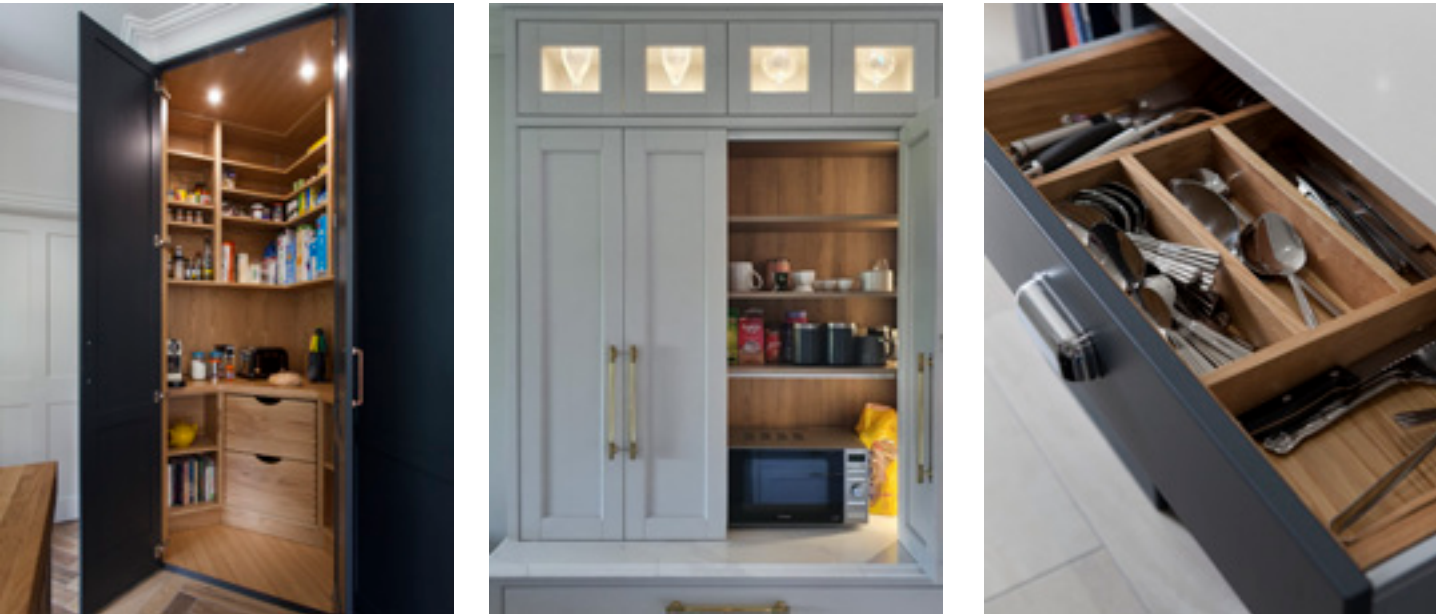


internal storage

Pantry larders, drinks cabinets, concealed counter-top breakfast areas, tea/coffee stations, drawer inserts and much more.

Your kitchen layout will be designed to suit your lifestyle and needs, and so too should the interior of your cabinetry.

Whether it's a fully practical storage space or a high impact feature area, we will have lots of options to offer or will be happy to work with you on designing a one-off piece to compliment your scheme.



We also have a wide range of drawer organisers integrated waste bins, space saving products & storage solutions from leading brands.



interior finishes

Customary:

Our typical carcasing is manufactured from the highest quality, 18mm Egger m.f.c. which has 16 finishes to choose from. Our hinges & lift systems are Blumotion soft close integrated & drawer runners are Blumotion Antaro light grey finish.



Upgrade:

There are a further 40 Egger m.f.c. finishes available as an upgrade and different styles & finishes for the Blumotion drawers.



Premium:

Our premium carcasing is manufactured from veneered premier plywood which can be finished natural or stained.

Our premium drawers are a solid timber box drawer with beautiful dovetail visible jointing set on hidden Blumotion runners. Again, these can be finished natural or stained.

You will have the option to mix and match, for example you could choose our customary carcasing but premium drawers.

seating



Kitchens have become such multi functional spaces and truly are the hub of the home. Think about how you will use your space at different times of the day and also who you will be sharing the space with. Do you want to create a quiet reading nook with a window seat, will the kids be doing homework at the table or on the island, if you have a separate more formal dining room would you like to create a casual dining space in the kitchen, do you want to create a social space with room for all your family and friends visiting.



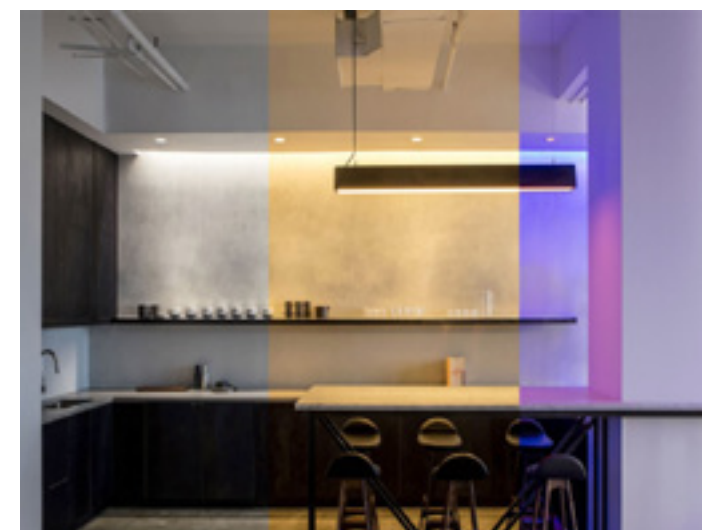
lighting



Feature lighting can transform the atmosphere of any space.

After your main concept design is agreed we will discuss through your feature lighting options which can range from simple display spotlighting and under cabinet strip lighting through to remote control or smart zoneable, dimmable & tuneable dramatic schemes.

Consider how you use the room for different tasks at different times of day, from strong task lighting required for preparing meals to creating an ambient and relaxed environment in the evenings.



Tuneable, dimmable & colour change lighting



Remote control & Smart lighting

our process



1. Prepare

To get the most out of this process you will need to give us a starting point. Do some research on different styles of kitchens, find out what you like and dislike, think about how you want your space to be used and function. Also think about what your budget might be and what you would like to include within this.



2. Get In Touch

A member of our team will take some time to initially discuss your project, including styles you like, timeframe & initial budget. We will then follow up with an e-mail to request plans, sizing, inspiration pics, etc...



3. Consultation

When we receive the relevant info, we will arrange an initial consultation. This will usually last 60 – 90 mins and can be in our showroom or via (an online) video call if more suitable. Here we will go much deeper into your wants & needs and from this we will follow up with an initial plan/outline for the room along with an initial costing.



4. Full Presentation

If you are provisionally satisfied with the initial outline, let us know and we will proceed to full design. We will then invite you back to our showroom to present the fully rendered images of your room and discuss through in detail the specification, the pricing, and your options.



5. Committing To The Project

If you are happy with the concept package created for you, to move forward, we ask for a 5% deposit as a commitment to the project. You are free to make changes after this point right up until Finalising & Sign off. This deposit will fix your pricing for a set timeframe, release all design work, allow us to visit site and amend design if/when necessary. (We allow for 3 additional drafts of your design, with each draft including multiple options if necessary)



6. Site Survey

With a replacement kitchen, we will go to site to survey the space and return closer to the time if you require us to meet with any 3rd party trades people like electricians etc. For a new build we will usually schedule our initial survey at 1st fix stage to mark out for services and then return for final survey after plastering is completed.



7. Finalising

Once we have gained exact sizing, the design has been tweaked accordingly and you are ready to place your order, we will invite you back to the showroom for a finalising meeting. We will go through every line of the specification showing you the options at each stage and ensuring you know exactly what you are getting and are happy with every decision.



8. Sign Off

When you are satisfied, we will ask you to sign off on the finalised design, specification & quotation, ask for 50% payment and your project will proceed to manufacture.



9. Manufacturing

After signing off, you will be given an outline for lead-time and your project will be passed to our Projects Manager. It will be drafted and all working drawings will be processed and then passed to our manufacturing team. (Average lead-time is approx. 10-14 weeks depending on your chosen finishes and current workload, usually linked to the time of year)



10. Installation

Closer to your outlined installation window, our Projects Manager will be back in touch to arrange an exact installation date with you. (Please Note: If your project includes Granite or Quartz worktops, these will be templated early in the installation and will arrive approx. 7-10 days later)





DORANS
KITCHEN & HOME

thank you

We understand that the kitchen is the most important and central room in most homes and knowing where to start can be daunting and overwhelming.

We hope that this brochure has inspired you and introduced some of the key elements to consider when planning your project and provided you with the information you need to take that first step on your design journey.

Thank you for taking the time to read this brochure and for considering Doran Kitchens for your project, we look forward to working with you.



For more information & inspiration please visit our website & keep up to date by following us on our social media channels.



DORANS
KITCHEN & HOME

62 Dromintee Road,
Killeavy, Newry, BT35 8SJ

T: (NI 028) (ROI 048) 3084 8917

E: info@dorankitchens.com

W: dorankitchens.com